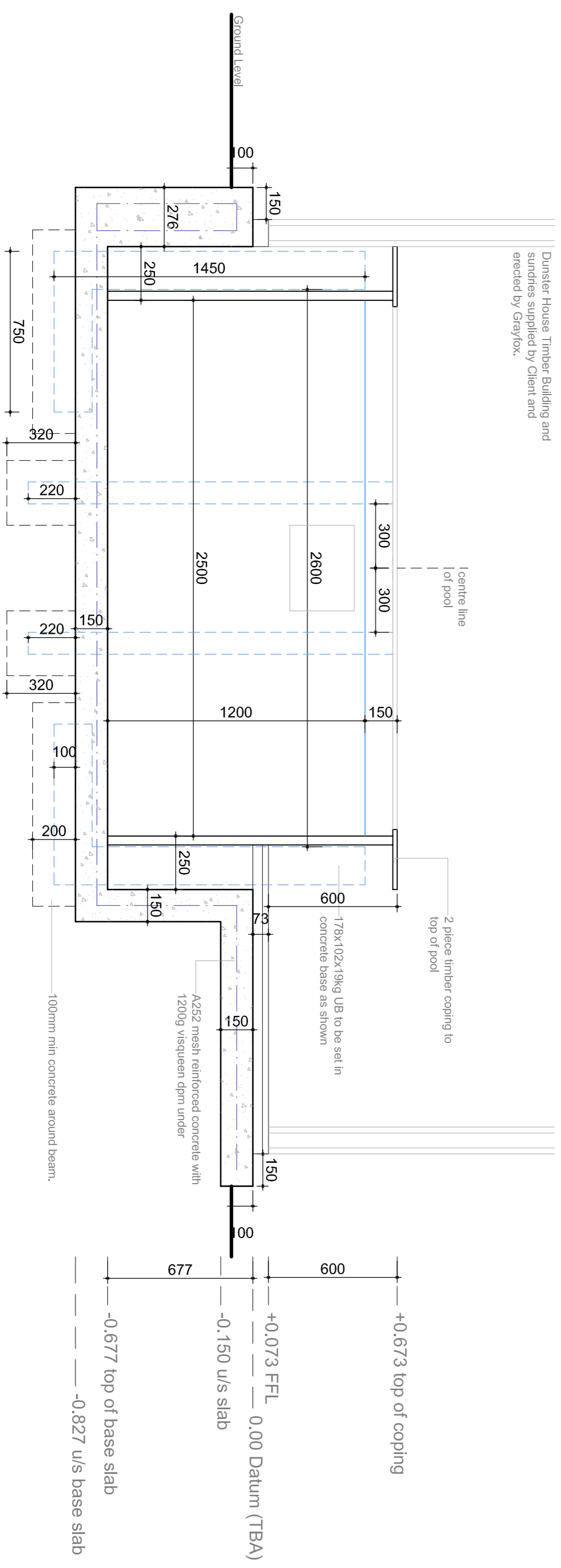
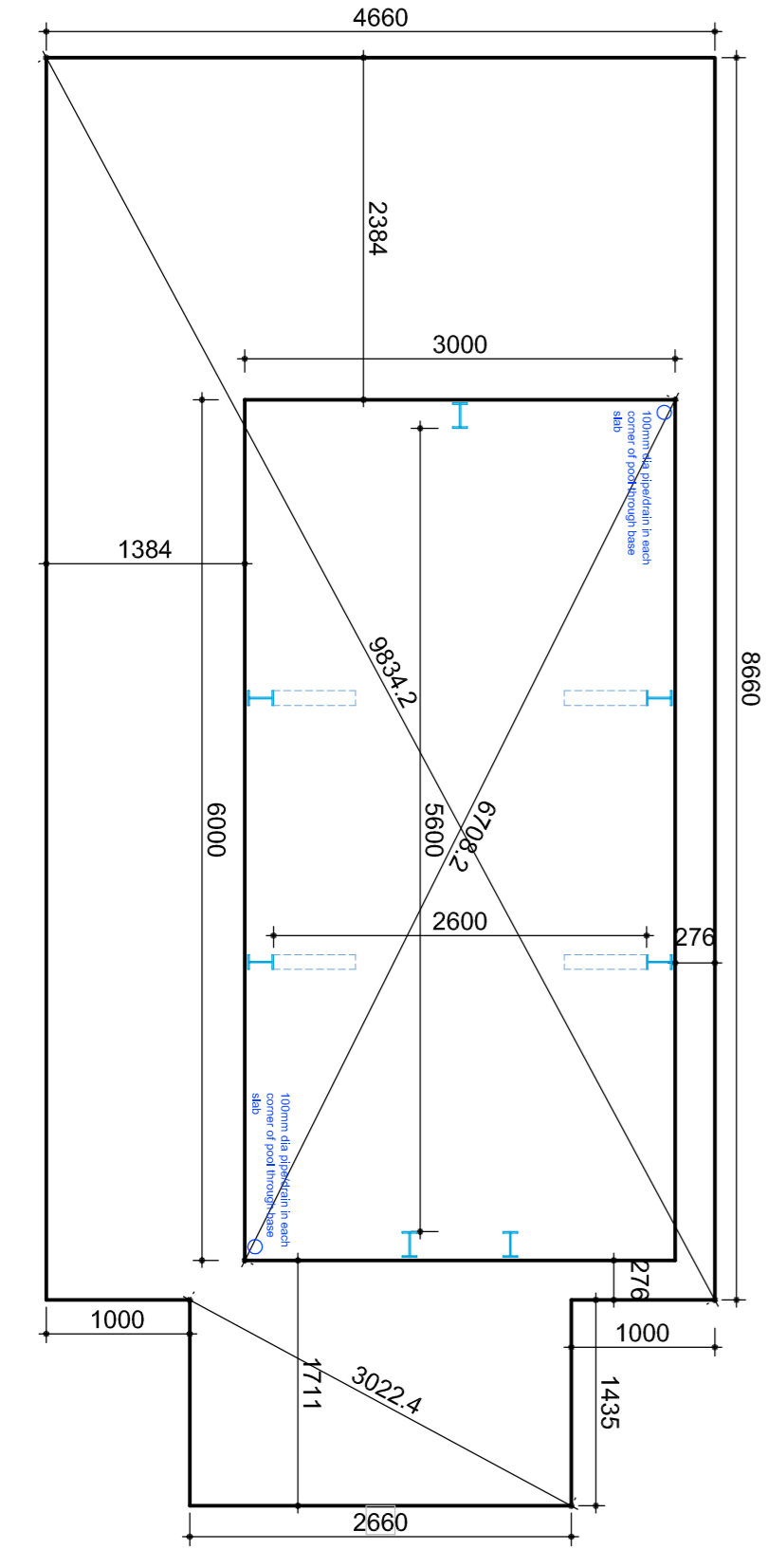


**PROPOSED POOL AND BUILDING PLAN - 1:20**



**PROPOSED SECTION A-A - 1:20**



**PROPOSED SETTING OUT PLAN - 1:50**

- DOUBLE SOCKET RCD (GvV)
- Wall Light - customer supplied
- LIGHT SWITCH - to match sockets

NB - Internal wiring to be standard twin and earth in white plastic trunking, and external wiring to be black surface mounted armoured cable. Options to fit customer supplied lights. All electrical works subject to strict oversight to be agreed.  
 Internal Lights to be 12V with transformer.  
 External Lights to be Mains Voltage - External Quality.  
 All Internal Wiring to be in surface mounted white plastic conduit fixed to wall at high level.  
 u/s socket - 450mm from FFL  
 top of light switch - 1200mm from FFL  
 Wall Lights - 1800mm from FFL

**EQUIPMENT INFORMATION/LEGEND**

1. 1 1/2" filter and MPV
2. 3/4 hp filter pump
3. Counter Current Pump
4. Vaporex 55 TTY Dehumidifier
5. Truseboard
6. Heat Exchanger - wall mounted
7. Boiler by others
8. Counter Current Swim Jet - Martin 30 II

**Works by Clients own Plumber:**

Supply and fit new Gas Boiler, and all associated works.  
 Connect water to boiler from supply by Grayfox.  
 Connect Gas supply (22mm yellow MDPE supplied and laid by Grayfox) at both ends - Boiler and Gas Meter, including all required isolating valves etc, and commission.  
 LPHW connection from boiler to Heat Exchanger.  
 LPHW connection to Vaporex 55.  
 Condensate from Vaporex 55 to external gully.

© COPYRIGHT GRAYFOX SWIMMING POOLS LTD.



SPAS STEAM & SAUNA SWIMMING POOLS  
 Mere House, Slow,  
 Lincoln LN1 2BZ  
 Tel: 01427 788682 Fax: 01427 789526  
 email: sales@grayfoxswimmingpools.co.uk

**Design and Build Project**

Job Title	Revised
Proposed Hydrotherapy Swimming Pool and Log Cabin Over	

Drawing Title  
**Proposed Hydrotherapy Swimming Pool and Log Cabin Over**

Scale	Date	Dwg. No.
1:20 and 1:50 @ A1	May 2014	
Drn.	Checked	
Steve Jones		